



200608C Alabama Chocolate Fudge Cake (cut) (Mademo



Pack Size: 1 X 16PP

Details: A deliciously moist rich chocolate cake filled and covered with chocolate fudge icing before being hand decorated with a spiral swirl design.

Allergen Information

Contains:

Cereal, Eggs, Gluten, Milk

Free from:

Celery, Crustaceans, Fish, Lupin, Molluscs, Mustard, Peanuts, Sesame, Sulphur Dioxide, Soya

May contain:

Nuts

Suitable for:

Vegetarians

Handling Information

Directions For Use:

DEFROSTING AND SERVING INSTRUCTIONS:

For best results remove all packaging whilst gateau is still frozen and place on a serving plate. Defrost for approximately 8 hours or overnight in a refrigerator (5°C). Alternatlvely remove the required number of slices from frozen product and

Storage Instructions:

Store at -18°C or colder.

Shelf Life Once Open:

2 Days

Product Ingredients

Product Ingredients:

Sugar, **WHEAT** Flour (**WHEAT** Flour, Calcium Carbonate, Iron, Niacin, Thiamin), Rapeseed Oil, **BUTTERMILK**, Fat Reduced Cocoa Powder (7.2%), Water, EGG, Dried Glucose Syrup, Palm Oil, EGG Yolk, Raising Agent (Sodium Bicarbonate), Emulsifiers (Mono- And Diglycerides Of Fatty Acids, Polyglycerol Esters Of Fatty

Nutritional Information

Typical Values per 100g/ml:

Based on a reference intake of an average adult (8400kJ/2000kCal) diet

Energy:

398 kcal / 1673 kJ

Fat:

15.8 g

of which saturates:

1.8 g

Carbohydrates:

58.4 g

of which sugars:

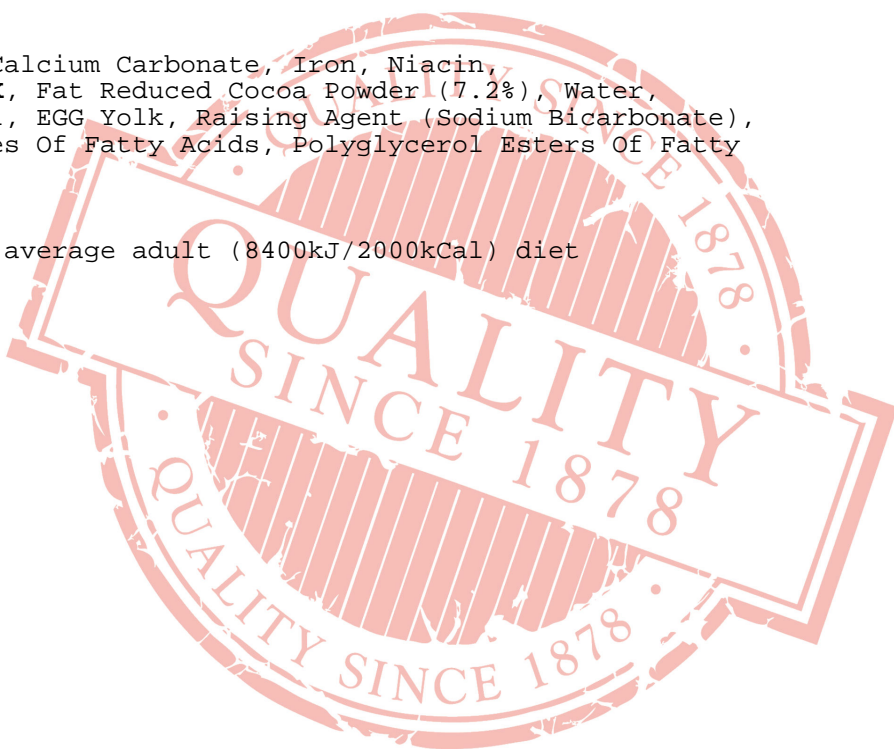
49.4 g

Fibre:

2.6 g

Protein:

3.9 g



Salt:
0.51 g

All product information is correct at time of upload. Information may change so please check the packaging before use.

If allergen information is not presented here, please obtain it from the product packaging or speak with our QA Department.