



202130C Strawberry Gateau (Mademoiselle)



Pack Size: 1 X 18PTN

Details: A two layer gateau made with dairy cream and strawberry filling layered between light textured vanilla sponges and decorated with cream rosettes and strawberries covered in a strawberry sauce. Side decorated with shortcake crumb.

Allergen Information

Contains:

Cereal, Eggs, Gluten, Milk

Free from:

Celery, Crustaceans, Fish, Lupin, Molluscs, Mustard, Peanuts, Sesame, Sulphur Dioxide, Soya

May contain:

Nuts

Suitable for:

Vegetarians

Handling Information

Directions For Use:

For best results remove all packaging whilst product is still frozen and place on a serving plate. Defrost for approximately 6 hours or overnight in a refrigerator at 5°C. Alternatively remove the required number of slices from frozen product and defrost each slice on a plate at 5°C for approximately 2 hours. Once defrosted store

Storage Instructions:

DO NOT REFREEZE ONCE DEFROSTED. STORE AT -18°C OR COLDER.

Product Ingredients

Product Ingredients:

Stabilised Cream [Cream (**MILK**) (20%), Dextrose, Glucose, Dried BUTTERMILK, Stabiliser (E407)], Sugar, Strawberries (13%), **WHEAT** Flour (with Calcium Carbonate, Iron, Niacin, Thiamin), **EGG**, Water, Strawberry Puree (3.4%), Glucose Syrup, Shortcake Biscuit [**WHEAT** Flour (with Calcium Carbonate,

Nutritional Information

Typical Values per 100g/ml:

Based on a reference intake of an average adult (8400kJ/2000kCal) diet

Energy:

257 kcal / 1079 kJ

Fat:

11 g

of which saturates:

6 g

Carbohydrates:

36 g

of which sugars:

22 g

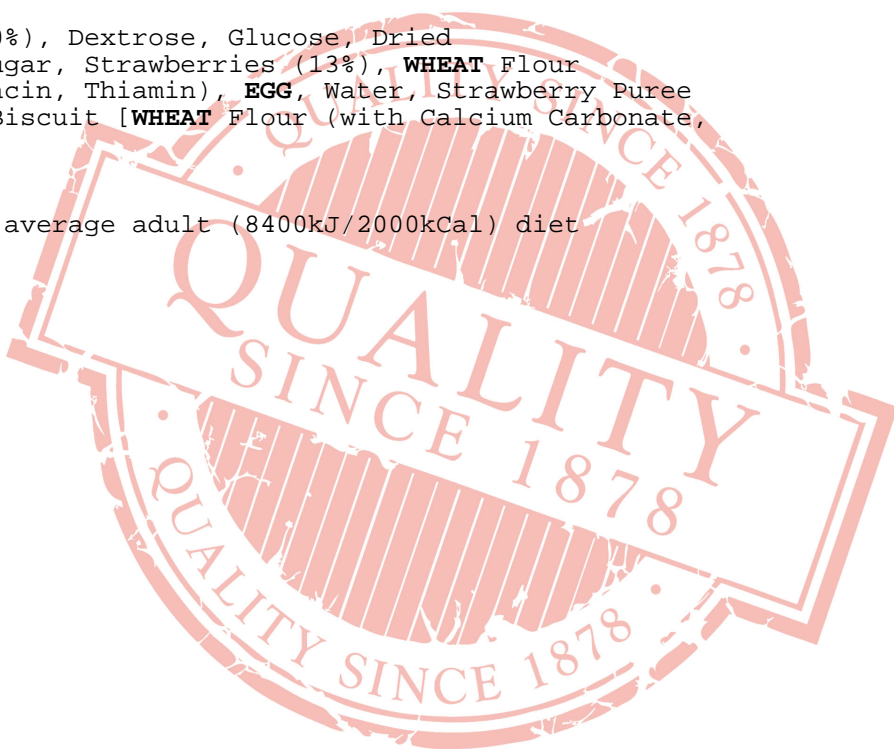
Fibre:

0.96 g

Protein:

3.7 g

Salt:



0.38 g

All product information is correct at time of upload. Information may change so please check the packaging before use.

If allergen information is not presented here, please obtain it from the product packaging or speak with our QA Department.