



203151C White Chocolate & Raspberry Cheesecake (Ma



Pack Size: 1 X 12PP

Details: A dreamy white chocolate cheesecake laced with raspberries, set on a crunchy biscuit base and finished with a flood of raspberry sauce.

Allergen Information

Contains:

Cereal, Soya, Eggs, Gluten, Milk

Free from:

Crustaceans, Fish, Lupin, Molluscs, Mustard, Peanuts, Sesame, Sulphur Dioxide, Celery

May contain:

Nuts

Suitable for:

Vegetarians

Handling Information

Directions For Use:

Remove all packaging allow to defrost in a refrigerator for approximately 8 hours or overnight. Alternatively, remove individual portions and allow to defrost for 3 hours in a refrigerator. Once defrosted keep refrigerated and consume within 48 hours.

Storage Instructions:

DO NOT REFREEZE ONCE DEFROSTED.
STORE AT -18°C OR COLDER.

Storage After Opening:

Once defrosted keep refrigerated and consume within 48 hours.

Shelf Life Once Open:

2 Days

Product Ingredients

Product Ingredients:

Full Fat Soft Cheese (29%) (Cream (**MILK**), Water, Skimmed **MILK** Powder, Cornflour, **BUTTERMILK** Powder, Salt), Raspberry Compote (18%) (Water, Sugar, Raspberry, Modified Maize Starch, Plum Juice From Concentrate, Raspberry Juice From Concentrate, Gelling Agent (Pectin), Acidity Regulators (Citric Acid, Sodium

Nutritional Information

Typical Values per 100g/ml:

Based on a reference intake of an average adult (8400kJ/2000kCal) diet

Energy:

306 kcal / 1277 kJ

Fat:

18.2 g

of which saturates:

10.2 g

Carbohydrates:

31.71 g

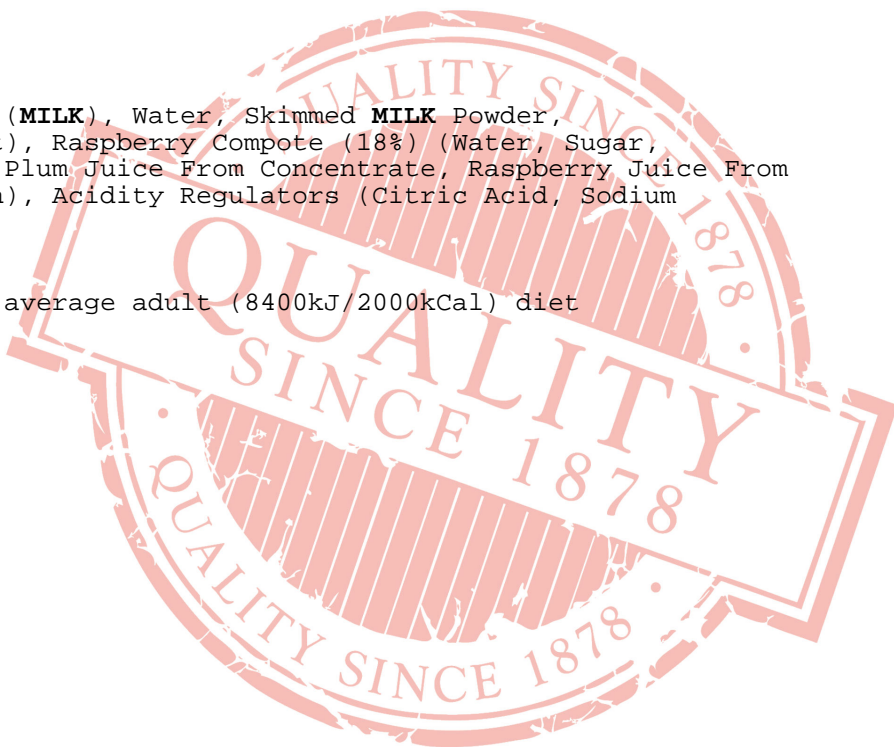
of which sugars:

23.1 g

Fibre:

1.1 g

Protein:



3.5 g

Salt:

0.24 g

All product information is correct at time of upload. Information may change so please check the packaging before use.

If allergen information is not presented here, please obtain it from the product packaging or speak with our QA Department.