



203644C Death by Chocolate Ice Cream (Lakes)



Pack Size: 4LT TUB

Details: Creamy dairy ice cream prepared with red cocoa powder and swirled with a rich dark chocolate sauce.

Allergen Information

Contains:

Soya, Milk

Free from:

Cereal, Crustaceans, Eggs, Fish, Lupin, Molluscs, Mustard, Peanuts, Sesame, Sulphur Dioxide, Celery

May contain:

Nuts

Suitable for:

Vegetarians

Handling Information

Directions For Use:

Allow to soften slightly before tucking in!

Storage Instructions:

Store below -18°C.

Storage After Opening:

Do not refreeze if thawed.

Shelf Life Once Open:

0 Days

Product Ingredients

Product Ingredients:

Whole **MILK**, Sugar, Skimmed **MILK** Powder, Double Cream (**MILK**), Butter (**MILK**), Chocolate Sauce (**SOYA**), Dextrose, Cocoa Powder, Emulsifiers (Mono & Di Glycerides from Vegetable Origin), Stabilisers (Locust Bean Gum, Guar Gum, Carrageenan.)

Nutritional Information

Typical Values per 100g/ml:

Based on a reference intake of an average adult (8400kJ/2000kCal) diet

Energy:

113 kcal / 556 kJ

Fat:

6.5 g

of which saturates:

4 g

Carbohydrates:

15 g

of which sugars:

15 g

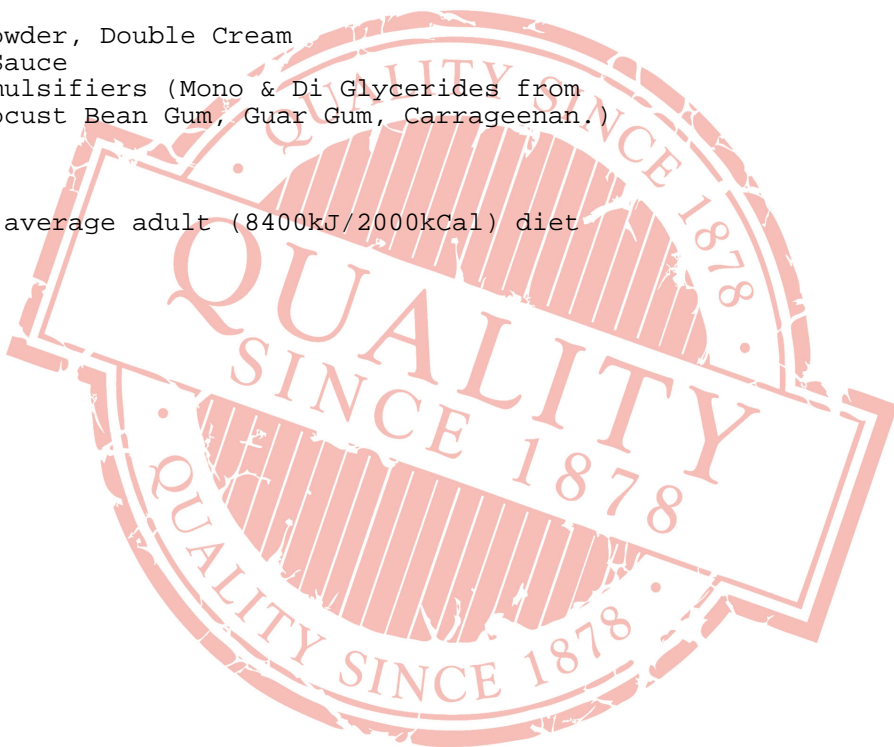
Fibre:

1.6 g

Protein:

2.5 g

Salt:



0.12 g

All product information is correct at time of upload. Information may change so please check the packaging before use.

If allergen information is not presented here, please obtain it from the product packaging or speak with our QA Department.