



## 203701C Double Jersey Ice Cream Tubs (Lakes)



**Pack Size:** 24 X 125ML

**Details:** Simply made with fresh whole milk, Jersey double cream and butter. No flavourings, colourings, just a deeply creamy ice cream.

### Allergen Information

**Contains:**

Milk

**Free from:**

Cereal, Celery, Crustaceans, Eggs, Fish, Lupin, Molluscs, Mustard, Peanuts, Sesame, Sulphur Dioxide, Soya

**May contain:**

Nuts

**Suitable for:**

Vegetarians

### Handling Information

**Directions For Use:**

Allow to soften slightly before tucking in!

**Storage Instructions:**

Store below -18°C.

**Storage After Opening:**

Do not refreeze if thawed.

**Shelf Life Once Open:**

0 Days

### Product Ingredients

**Product Ingredients:**

Whole **MILK**, Sugar, Butter (**MILK**), Jersey Cream (**MILK**) (5.5%), Skimmed **MILK** Powder, Dextrose, Emulsifiers (Mono and Di Glycerides), Stabilisers: Locust Bean Gum, Guar Gum, Sodium Alginate, Carrageenan.

### Nutritional Information

**Typical Values per 100g/ml:**

Based on a reference intake of an average adult (8400kJ/2000kCal) diet

**Energy:**

123 kcal / 515 kJ

**Fat:**

6.8 g

**of which saturates:**

4.8 g

**Carbohydrates:**

13 g

**of which sugars:**

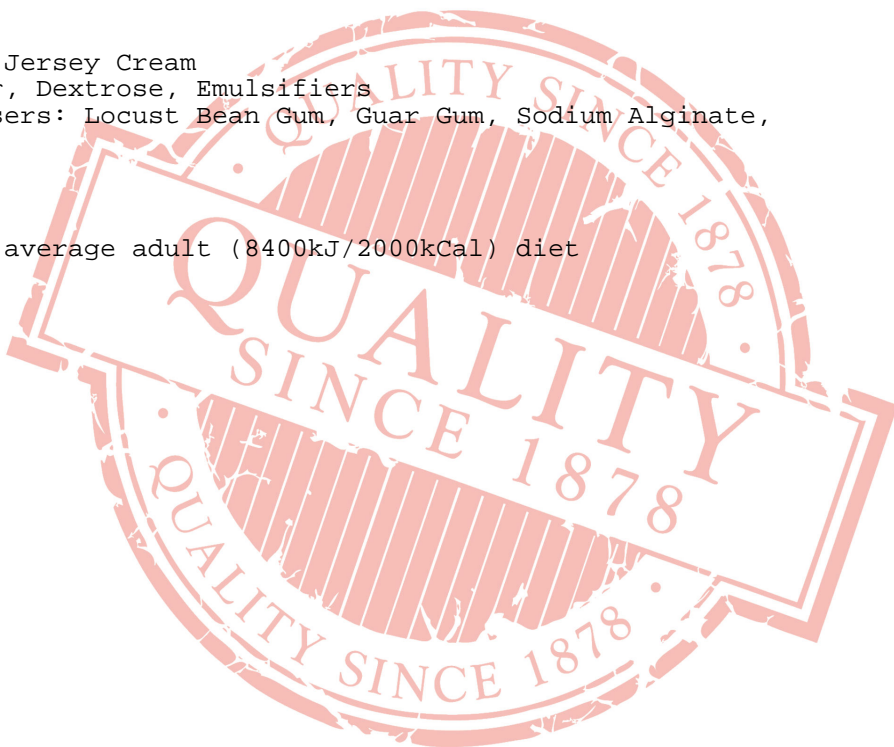
12 g

**Fibre:**

1.1 g

**Protein:**

2.4 g



**Salt:**  
0.09 g

All product information is correct at time of upload. Information may change so please check the packaging before use.

If allergen information is not presented here, please obtain it from the product packaging or speak with our QA Department.