



204909C Utter Chocolate Ice Cream Ind Tubs (Doddin



Pack Size: 12 X 120ML

Details: Using the finest west African cocoa beans and real chocolate results in a uniquely rich chocolate ice cream.

Allergen Information

Contains:

Soya, Eggs, Milk

Free from:

Cereal, Crustaceans, Fish, Peanuts, Lupin, Molluscs, Mustard, Sesame, Sulphur Dioxide, Celery

May contain:

Nuts

Suitable for:

Halal, Vegetarians

Handling Information

Directions For Use:

Allow to soften slightly before serving to experience the full creamy texture

Storage Instructions:

Keep frozen, below -18C

Storage After Opening:

Keep Frozen -18C

Shelf Life Once Open:

0 Days

Product Ingredients

Product Ingredients:

Fresh Whole **MILK**, Sugar, Pasteurised Double Cream (**MILK**), Skimmed **MILK** Powder, Chocolate (4.5%) (Cocoa Mass, Sugar, Cocoa Butter, Fat Reduced Cocoa Powder, Emulsifier **SOYA** Lecithin) (**MILK**), Cocoa Mass (**MILK**), Cocoa Powder (Cocoa Bean, Potassium Carbonate), Pasteurised **EGG**

Nutritional Information

Typical Values per 100g/ml:

Based on a reference intake of an average adult (8400kJ/2000kCal) diet

Energy:

249 kcal / 1041 kJ

Fat:

14 g

of which saturates:

8.4 g

Carbohydrates:

26 g

of which sugars:

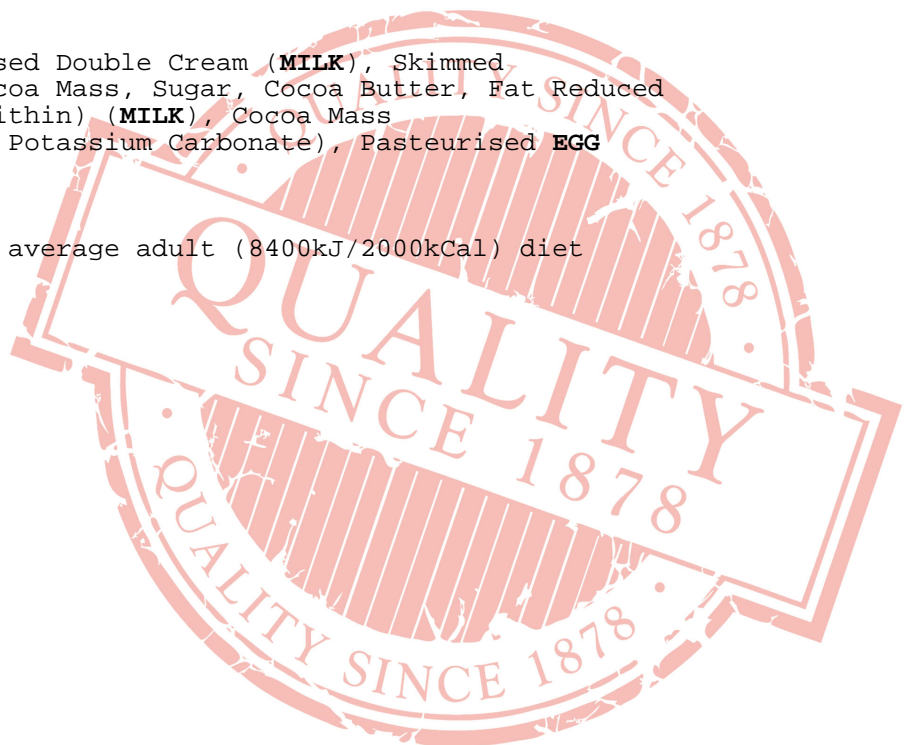
25 g

Fibre:

No Data

Protein:

5.2 g



Salt:
0.15 g

All product information is correct at time of upload. Information may change so please check the packaging before use.

If allergen information is not presented here, please obtain it from the product packaging or speak with our QA Department.