



205581C Belgian Chocolate Cake (Handmade)



Pack Size: 1 X 14PP

Details: A moist sponge filled with a light chocolate ganache, topped with a dark chocolate ganache, and decorated with ganache piping.

Allergen Information

Contains:

Cereal, Soya, Eggs, Gluten, Milk

Free from:

Crustaceans, Fish, Lupin, Molluscs, Mustard, Peanuts, Sesame, Sulphur Dioxide, Celery

May contain:

Nuts

Suitable for:

Vegetarians

Handling Information

Directions For Use:

Remove wrapping before defrosting.

Defrost at room temperature UNDER A DOME for 4 hours.

Serve at room temperature.

Once defrosted store in a cool dry place.

Storage Instructions:

Keep frozen, store at -18°C or below

As we do not add stabilisers, 'blooming' may occur on the icing. This is caused by temperature-sensitive ice crystals developing during storage. This poses no risk to food safety. The small crystals will disappear

Product Ingredients

Product Ingredients:

Dark Brown Sugar [Sugar, Cane Molasses], **WHEAT** Flour (with Calcium Carbonate, Niacin, Iron, Thiamin), Whipping Cream [Cream (**MILK**), Stabiliser (Carrageenan)], Dark Chocolate (12%) [Cocoa Mass, Sugar, Cocoa Butter, Emulsifier (Lecithins (**SOYA**)), Natural Vanilla Flavouring], Pasteurised

Nutritional Information

Typical Values per 100g/ml:

Based on a reference intake of an average adult (8400kJ/2000kCal) diet

Energy:

404 kcal / 1691 kJ

Fat:

20.6 g

of which saturates:

12.4 g

Carbohydrates:

47.4 g

of which sugars:

33.5 g

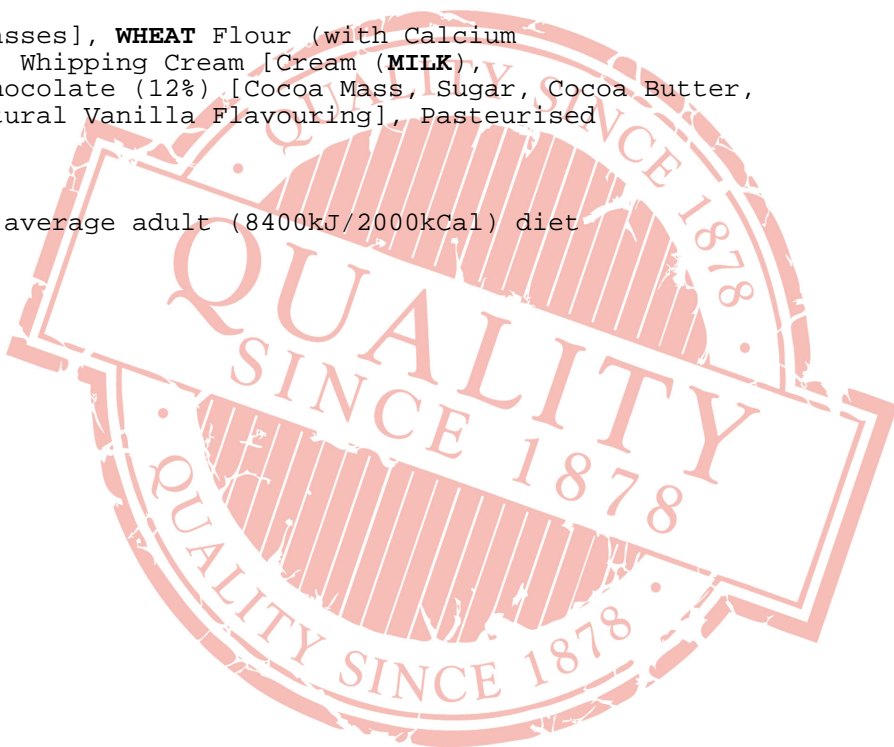
Fibre:

3.4 g

Protein:

5.4 g

Salt:



0.59 g

All product information is correct at time of upload. Information may change so please check the packaging before use.

If allergen information is not presented here, please obtain it from the product packaging or speak with our QA Department.