



205873S Blueberry & White Chocolate Cheese Brulee



Pack Size: 1 X 14PP

Details: White chocolate cheesecake aswirl with wild Maine blueberries imbue their luscious flavour along with their prized antioxidant properties. Hand-fired and glazed.

Allergen Information

Contains:

Cereal, Soya, Eggs, Milk

Free from:

Crustaceans, Fish, Mustard, Molluscs, Lupin, Sesame, Sulphur Dioxide, Celery

May contain:

Nuts, Peanuts

Suitable for:

Kosher, Halal, Vegetarians

Handling Information

Directions For Use:

Always remove shrink-wrap prior to defrosting.

Whole Cheesecake: Under refrigeration 8 - 10 hours or overnight.

Plated Slices: Under refrigeration 5 hours.

Holds best when kept covered in cooler, away from the door and from foods with strong

Storage Instructions:

Frozen: 18 months

Under Refrigeration: 7 days (must be covered).

Room Temperature: Not recommended.

Product Ingredients

Product Ingredients:

CREAM CHEESE (36.78%) [pasteurized **MILK** and **CREAM**, salt, cheese cultures], **EGGS**, white confectionary [sugar, palm kernel oil, palm oil, **WHEY (MILK)**, nonfat **MILK**, emulsifier (E322 (**SOY**)), vanilla], sugar, margarine [**SOYBEAN** oil, palm oil, water, salt, emulsifier

Nutritional Information

Typical Values per 100g/ml:

Based on a reference intake of an average adult (8400kJ/2000kCal) diet

Energy:

340 kcal / 1423 kJ

Fat:

24 g

of which saturates:

14 g

Carbohydrates:

27 g

of which sugars:

18 g

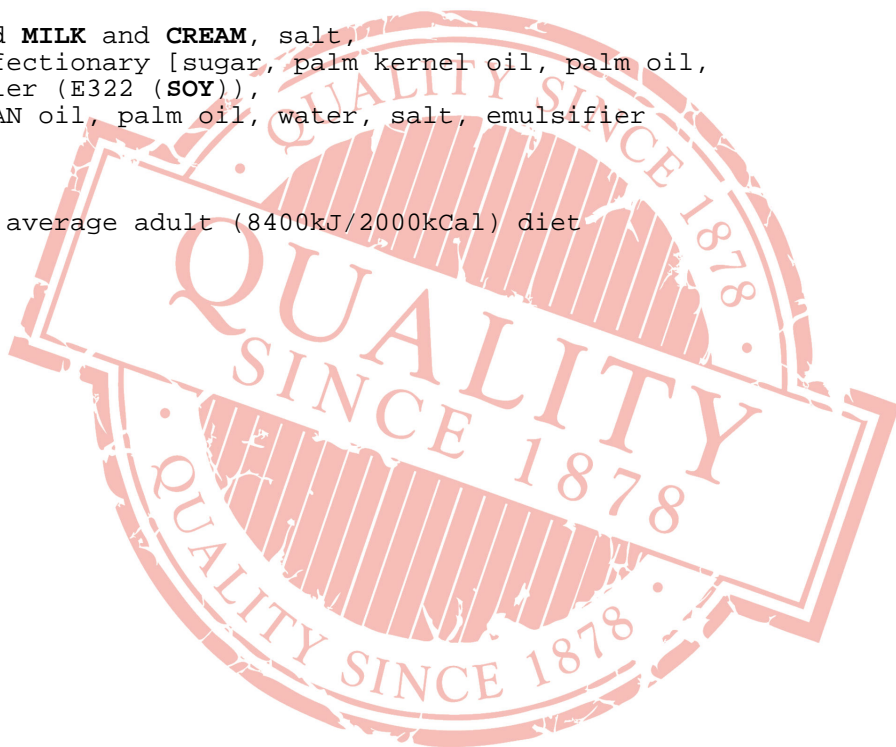
Fibre:

1 g

Protein:

5 g

Salt:



0.64 g

All product information is correct at time of upload. Information may change so please check the packaging before use.

If allergen information is not presented here, please obtain it from the product packaging or speak with our QA Department.