



206815C White Deli Roll (Kara)



Pack Size: 6 X 6

Details: A pre-sliced white deli roll coated with a semolina topping, ideal for sub sandwiches.

-Thaw and serve.

-Each roll weighs approx. 100g.

Allergen Information

Contains:

Cereal, Gluten

Free from:

Celery, Crustaceans, Peanuts, Fish, Lupin, Molluscs, Mustard, Nuts, Sulphur Dioxide

May contain:

Milk, Eggs, Sesame, Soya

Suitable for:

Vegetarians

Handling Information

Directions For Use:

Directions For Use :

Store Frozen at -18°C or below.

To defrost: remove from the case and leave in the pack at room temperature for 2 hours, or until fully defrosted.

Storage Instructions:

Storage Instructions :

Once defrosted, store in a container, in a cool dry place away from direct sunlight.
Once defrosted use within 48 hours.

Product Ingredients

Product Ingredients:

Wheat Flour (WHEAT Flour, Calcium Carbonate, Niacin, Iron, Thiamin), Water, WHEAT Semolina, Palm Oil, Sugar, Yeast (Yeast, Deactivated Yeast), Salt, Malted WHEAT Flour, WHEAT germ Flour, WHEAT Flour, Flour Treatment Agent (E300).

Nutritional Information

Typical Values per 100g/ml:

Based on a reference intake of an average adult (8400kJ/2000kCal) diet

Energy:

259 kcal / 1094 kJ

Fat:

3.2 g

of which saturates:

1.3 g

Carbohydrates:

47.9 g

of which sugars:

3.4 g

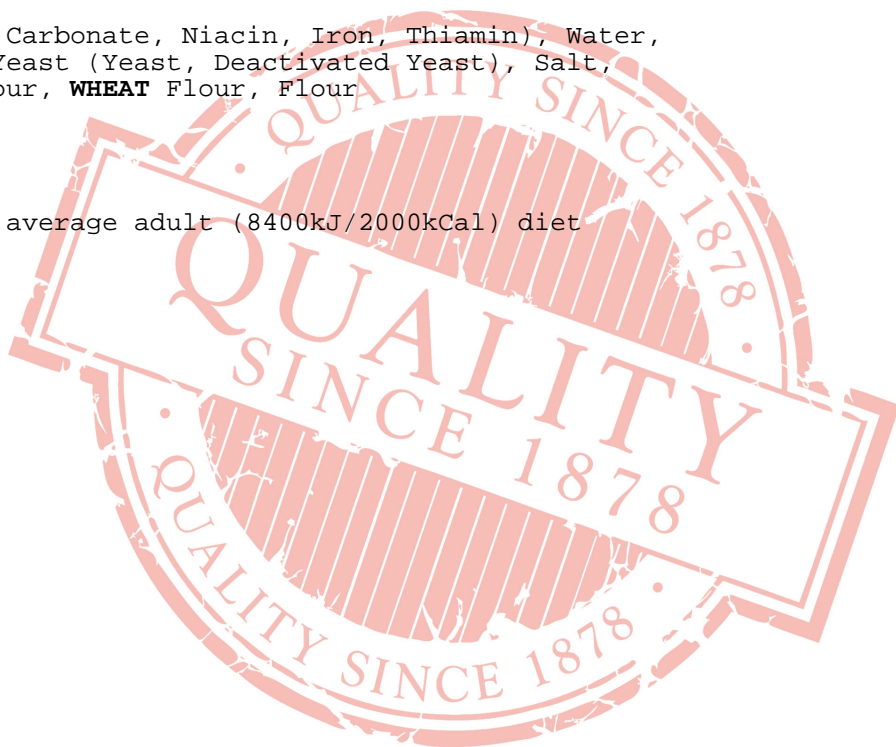
Fibre:

3.5 g

Protein:

8 g

Salt:



0.78 g

All product information is correct at time of upload. Information may change so please check the packaging before use.

If allergen information is not presented here, please obtain it from the product packaging or speak with our QA Department.