



## 206826C Macaroni Cheese (Authentic Curry Co.)



**Pack Size:** 12 X 400G

**Details:** The Authentic Curry Company has a long tradition of producing the highest quality cuisine, using only the finest, freshest ingredients, producing truly mouth-watering menu options.

Macaroni cheese with creamy mature cheddar sauce, with a hint of nutmeg and spice. Made with 'cellentani' corkscrew shaped pasta for a unique appearance.

### Allergen Information

**Contains:**

Cereal, Celery, Gluten, Mustard, Milk

**Free from:**

Crustaceans, Eggs, Fish, Lupin, Molluscs, Nuts, Peanuts, Sesame, Sulphur Dioxide

**May contain:**

Soya

**Suitable for:**

Vegetarians

### Handling Information

**Directions For Use:**

Cooking Guidelines: Microwave from defrosted. Ensure product is fully defrosted in a refrigerator overnight. All appliances vary, the following are guidelines only.

Microwave: (700watt), Pierce film and microwave on full power for 3 minutes.

Carefully move product from side to side to mix. Return product to the microwave for

**Storage Instructions:**

Store at -18c or below

**Shelf Life Once Open:**

2 Days

### Product Ingredients

**Product Ingredients:**

Cheese Sauce (67%), Cooked Pasta (33%)

Cheese Sauce Contains: Bechamel Sauce [Water, Full Cream **MILK** Powder, Cornflour, Cream Powder (**MILK**), Onion Powder, Salt, Yeast Extract, Spices, Nutmeg, White Pepper, Herb: **CELERY**.] Mature Cheddar Cheese

### Nutritional Information

**Typical Values per 100g/ml:**

Based on a reference intake of an average adult (8400kJ/2000kCal) diet

**Energy:**

133 kcal / 558 kJ

**Fat:**

5.99 g

**of which saturates:**

3.82 g

**Carbohydrates:**

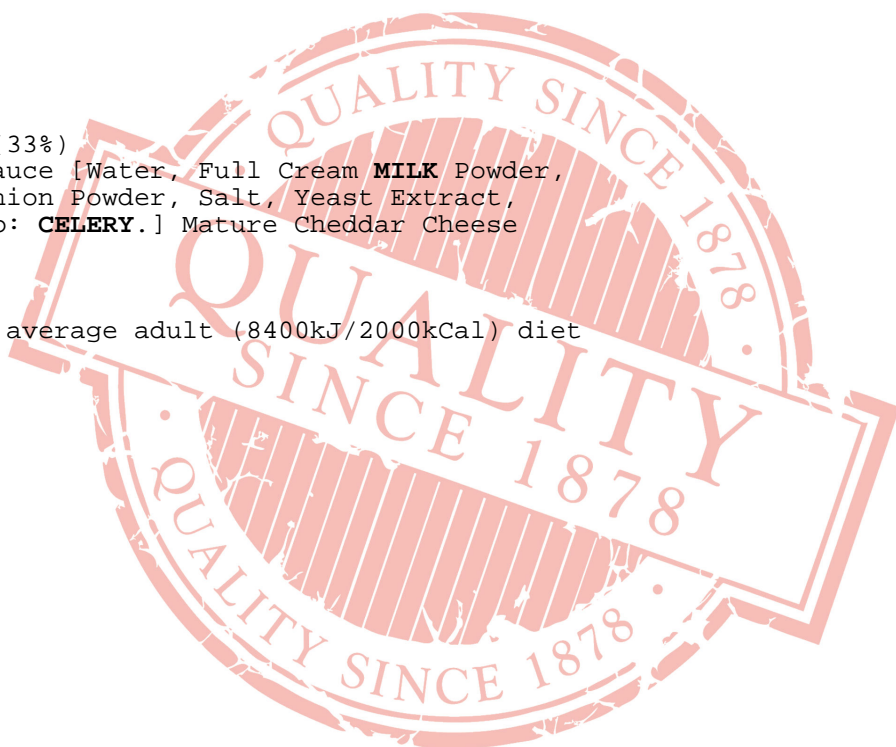
14.45 g

**of which sugars:**

2.01 g

**Fibre:**

0.61 g



**Protein:**

5.22 g

**Salt:**

0.61 g

All product information is correct at time of upload. Information may change so please check the packaging before use.

If allergen information is not presented here, please obtain it from the product packaging or speak with our QA Department.