



206846C Belgian Waffles 55g (Wafflemeister)



Pack Size: 42 X 55G

Details: Traditional classic Belgian liege waffles. Sweet, crunchy, honey coloured waffles. Delicious with ice cream, cream, jam, etc. Individually wrapped.

Allergen Information

Contains:

Cereal, Soya, Eggs, Gluten

Free from:

Crustaceans, Fish, Lupin, Nuts, Molluscs, Mustard, Peanuts, Sesame, Sulphur Dioxide, Celery

May contain:

Milk

Suitable for:

Vegetarians

Handling Information

Directions For Use:

Defrost at room temperature.

Your waffle can be enjoyed at room temperature or deliciously warm. For best results remove waffle from packaging - microwave for 15 seconds defrosted or 30 seconds from frozen. You can also heat your waffle in a toaster or a pre-heated oven at 180 C fro

Storage Instructions:

Store in the freezer at -18C or below. Do not refreeze after defrosting. Once defrosted - keep in the wrapper and use within 42 days. Once opened consume immediately.

Individual items are not dated coded. This is the responsibility of the end user onc

Product Ingredients

Product Ingredients:

WHEAT flour, sugar, margarine (vegetable oils and fats (palm and rapeseed)), water, emulsifiers soya lecithin, mono- and diglycerides of fatty acids, salt, acid regulator: citric acid, natural

Nutritional Information

Typical Values per 100g/ml:

Based on a reference intake of an average adult (8400kJ/2000kCal) diet

Energy:

451 kcal / 1885 kJ

Fat:

22.8 g

of which saturates:

10.9 g

Carbohydrates:

54.1 g

of which sugars:

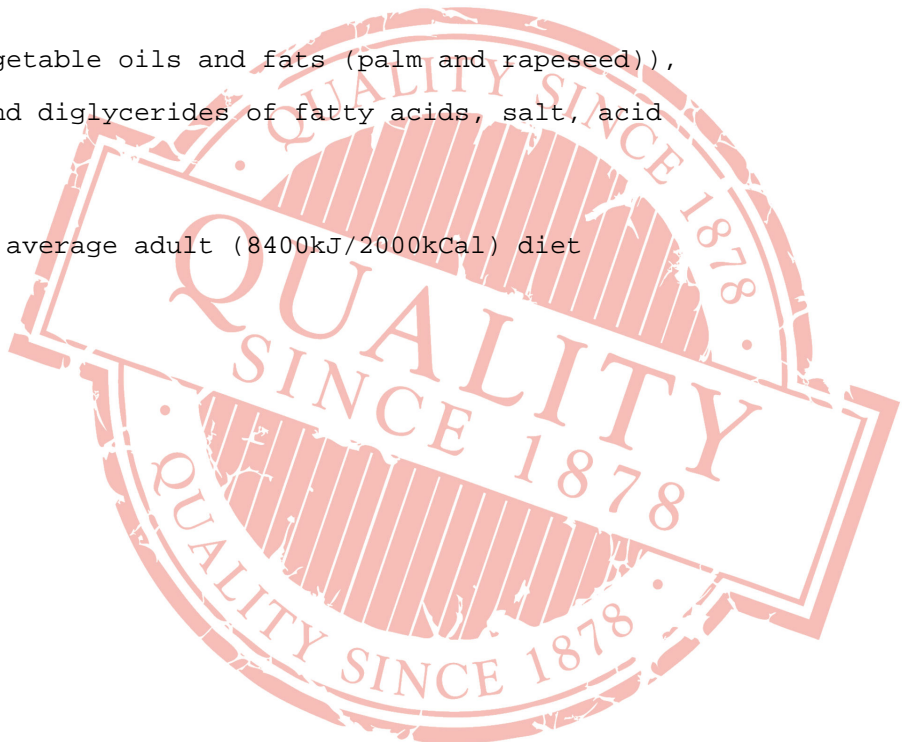
25.2 g

Fibre:

1.8 g

Protein:

6.3 g



Salt:
0.98 g

All product information is correct at time of upload. Information may change so please check the packaging before use.

If allergen information is not presented here, please obtain it from the product packaging or speak with our QA Department.